

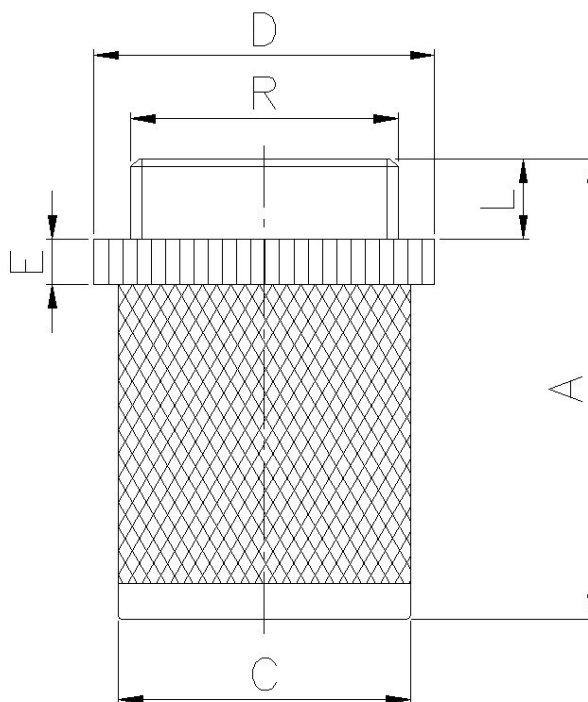
Art: 3160 Filtro Válvula Retención Check Valve Strainer

Características

1. Tamiz en acero inoxidable AISI 304.
2. Racor de Nylon PA 6.6.
3. Extremo rosca gas macho s/ ISO 228/1.
4. Temperatura máxima trabajo 90 °C.

Features

1. Stainless steel sieve AISI 304.
2. Nylon racord PA 6.6.
3. Thread end gas male according ISO 228/1.
4. Maximum working temperature 90 °C.



| Ref. | Medida / Size R | Luz malla / Sieve light | Dimensiones/Dimensions (mm) | | | | | Peso / Weight (g) |
|---------|--------------------|----------------------------|-----------------------------|-------|-------|------|-----|----------------------|
| | | | A | D | C | L | E | |
| 3160 03 | 3/8" | 1000μ | 49 | 23 | 20 | 7 | 5 | 6 |
| 3160 04 | 1/2" | 1000μ | 50,5 | 27 | 23,5 | 8 | 5,5 | 7 |
| 3160 05 | 3/4" | 1000μ | 57 | 34 | 30 | 7 | 5 | 11 |
| 3160 06 | 1" | 1000μ | 57,5 | 40,5 | 35,5 | 10 | 5 | 15 |
| 3160 07 | 1 1/4" | 1000μ | 69 | 48,5 | 43,5 | 10 | 5 | 19 |
| 3160 08 | 1 1/2" | 1000μ | 81 | 58 | 52,5 | 10 | 6 | 29 |
| 3160 09 | 2" | 1000μ | 96 | 67,5 | 62,5 | 11,5 | 6 | 41 |
| 3160 10 | 2 1/2" | 1200μ | 96 | 83 | 76 | 14,5 | 9,5 | 64 |
| 3160 11 | 3" | 1200μ | 116 | 100 | 91 | 15 | 9 | 73 |
| 3160 12 | 4" | 1200μ | 132 | 127,5 | 115,5 | 13,5 | 12 | 153 |